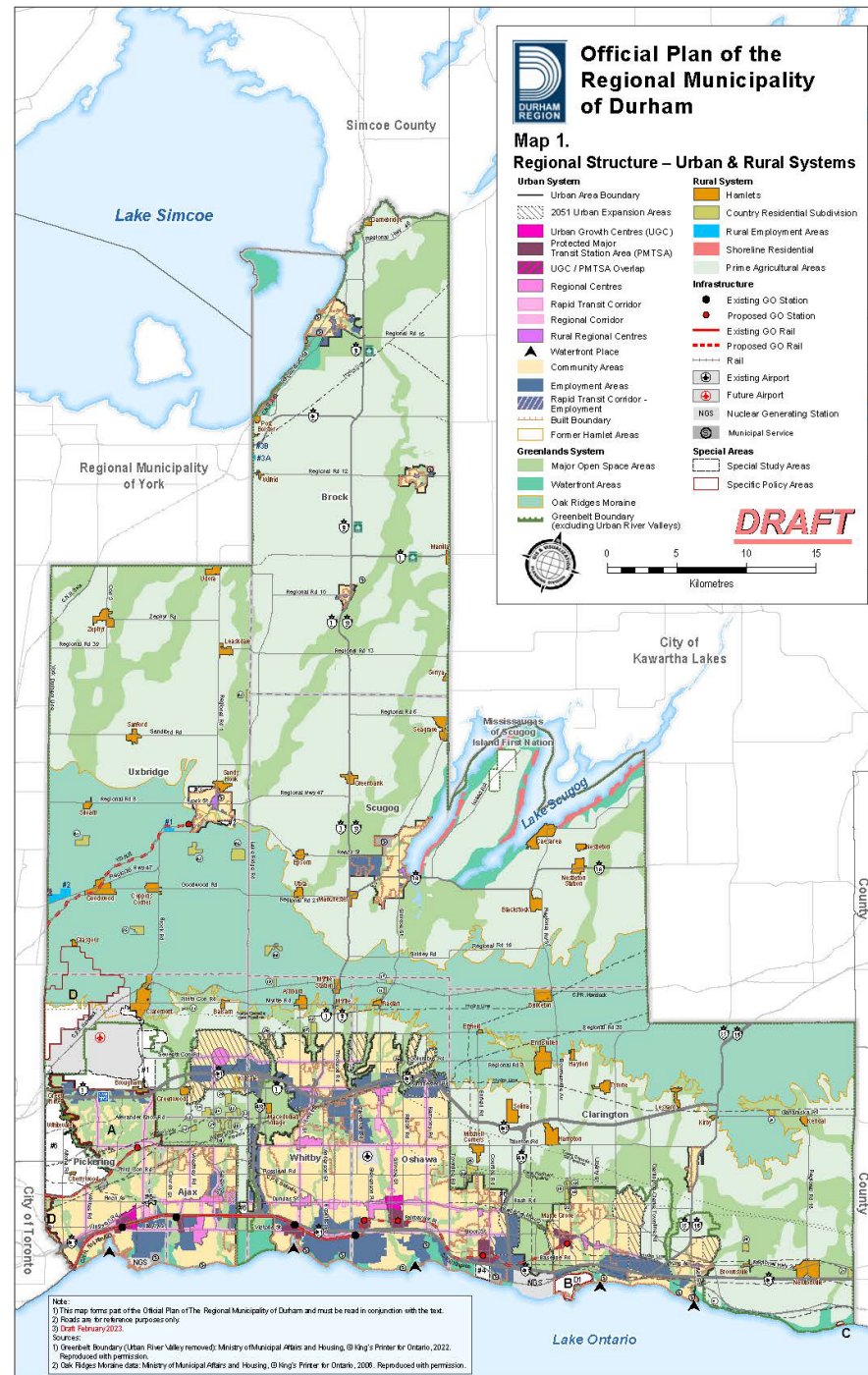




Draft Regional Official Plan (2023)

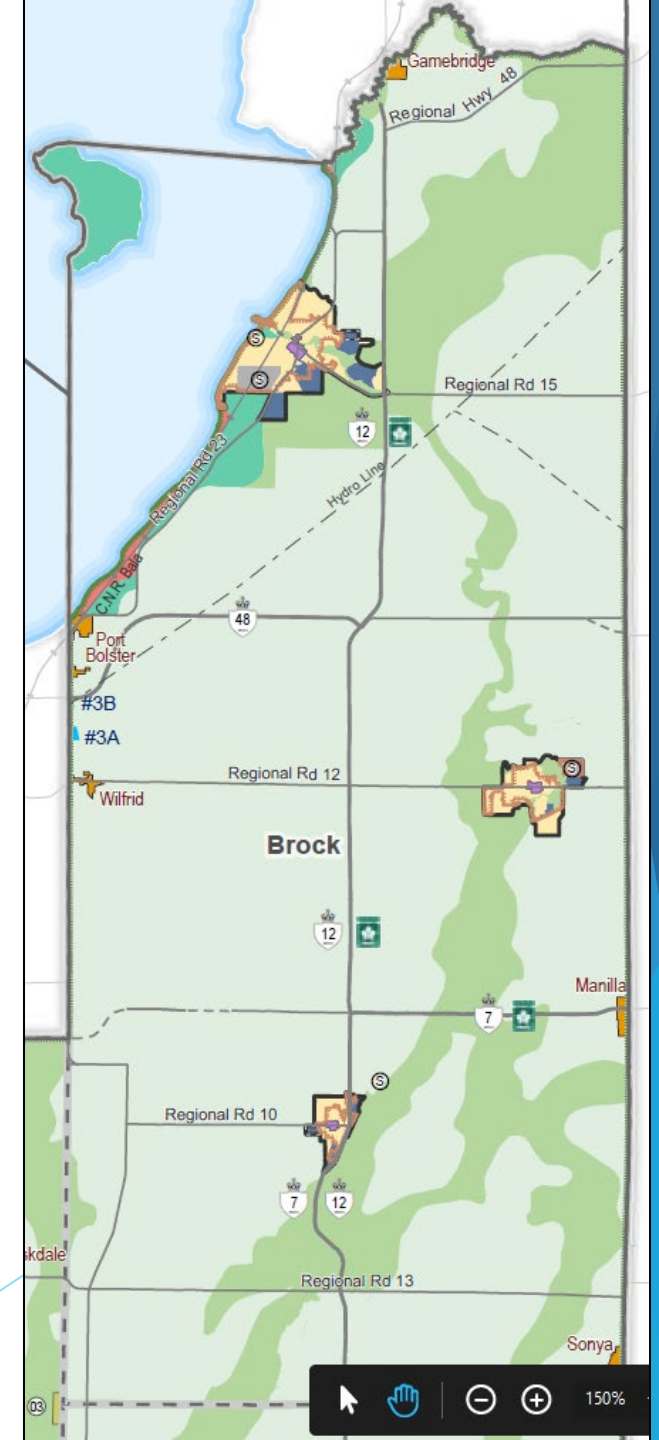
Regional Structure

- ▶ Urban System
- ▶ Rural System
- ▶ Greenlands System
- ▶ Transportation System



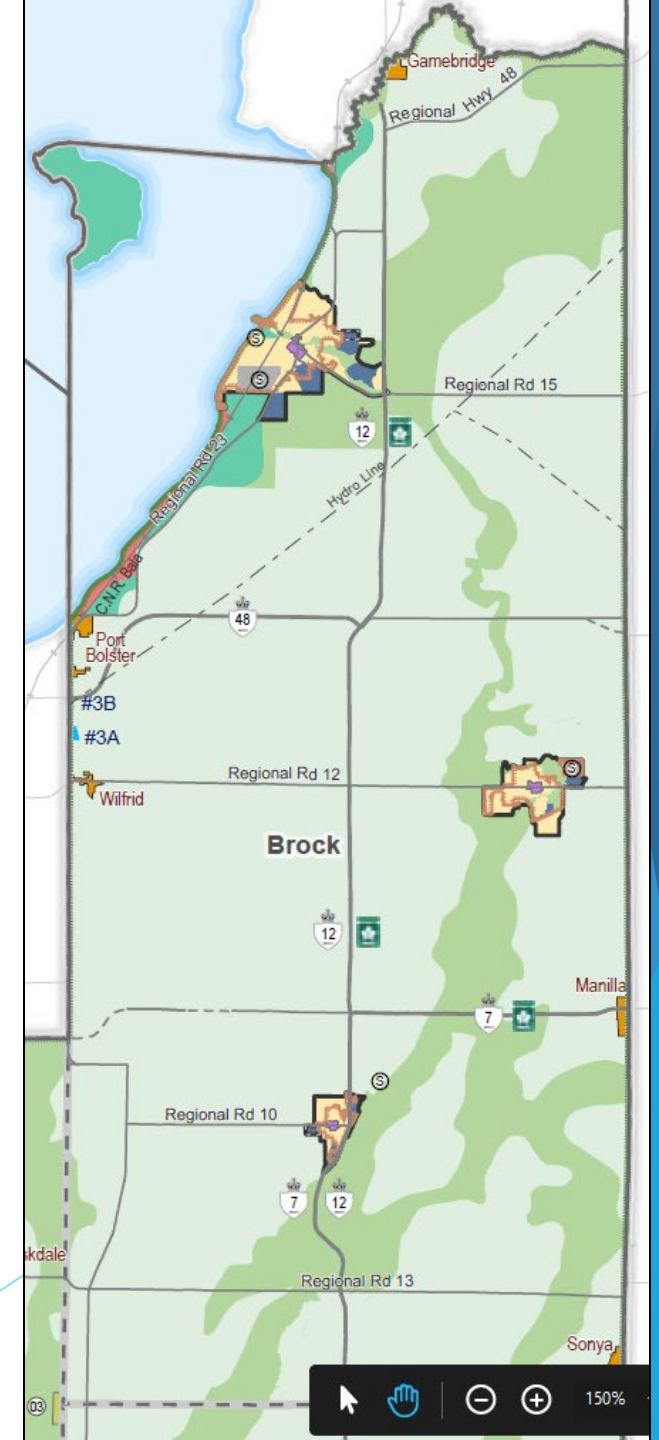
Regional Structure in Brock

- ▶ Urban System
 - ▶ Community Areas (Rural Regional Centres) and Employment Areas
- ▶ Rural System
 - ▶ Prime Agricultural Areas, Hamlets, Shoreline Residential, Aggregate Resources
- ▶ Greenlands System
 - ▶ Major Open Space Areas, Waterfront Areas and ORM
- ▶ Transportation System
 - ▶ Roads, active transportation (cycling paths, trails), transit, strategic goods network, rail



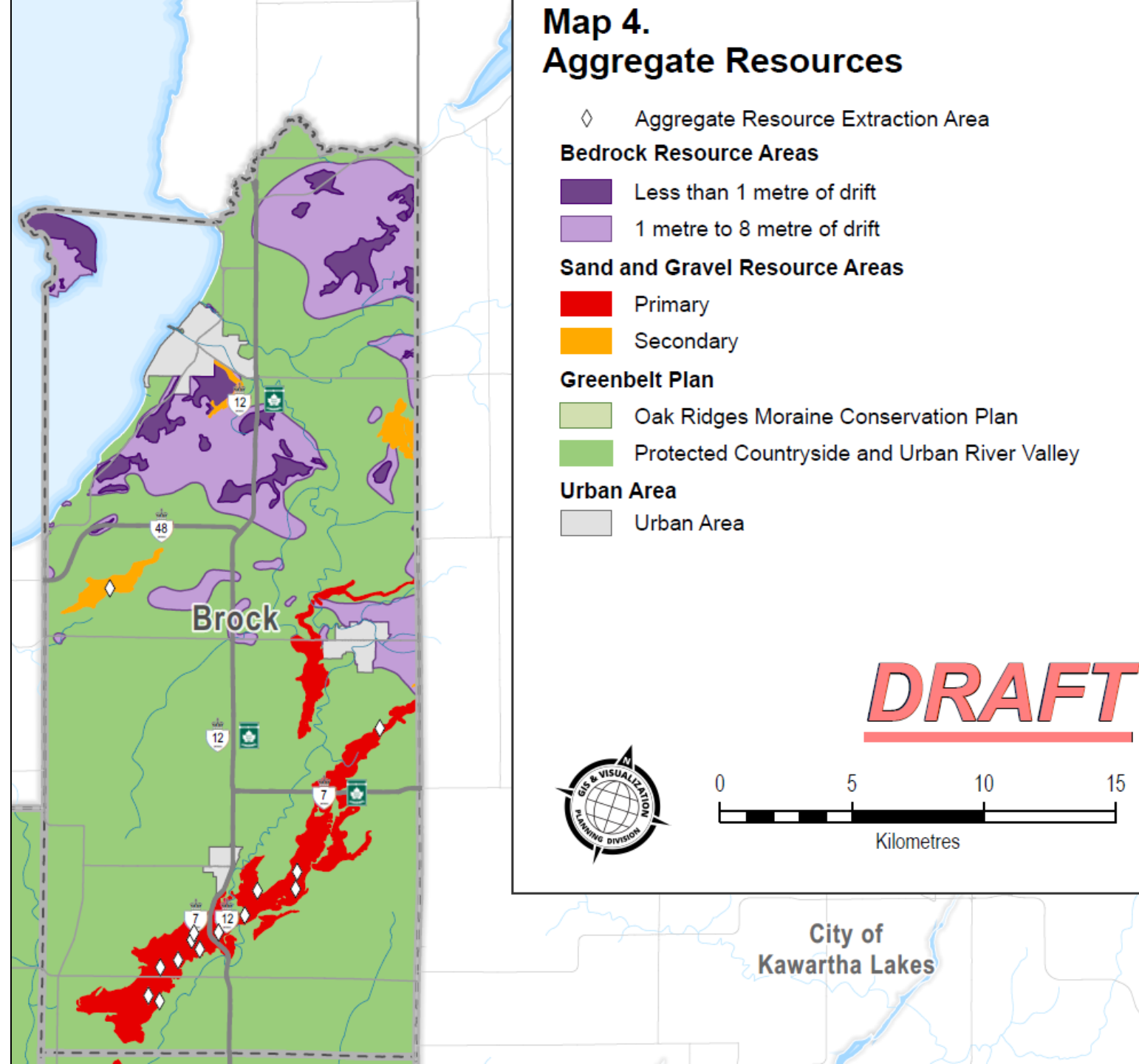
Employment Areas

- ▶ Policies prohibit sensitive land uses within Employment Areas
- ▶ Investment in servicing of employment areas critical to attracting employment within Employment Areas
- ▶ Urban expansion areas in Beaverton and Sunderland designated as Employment Area - not required to complete secondary plans



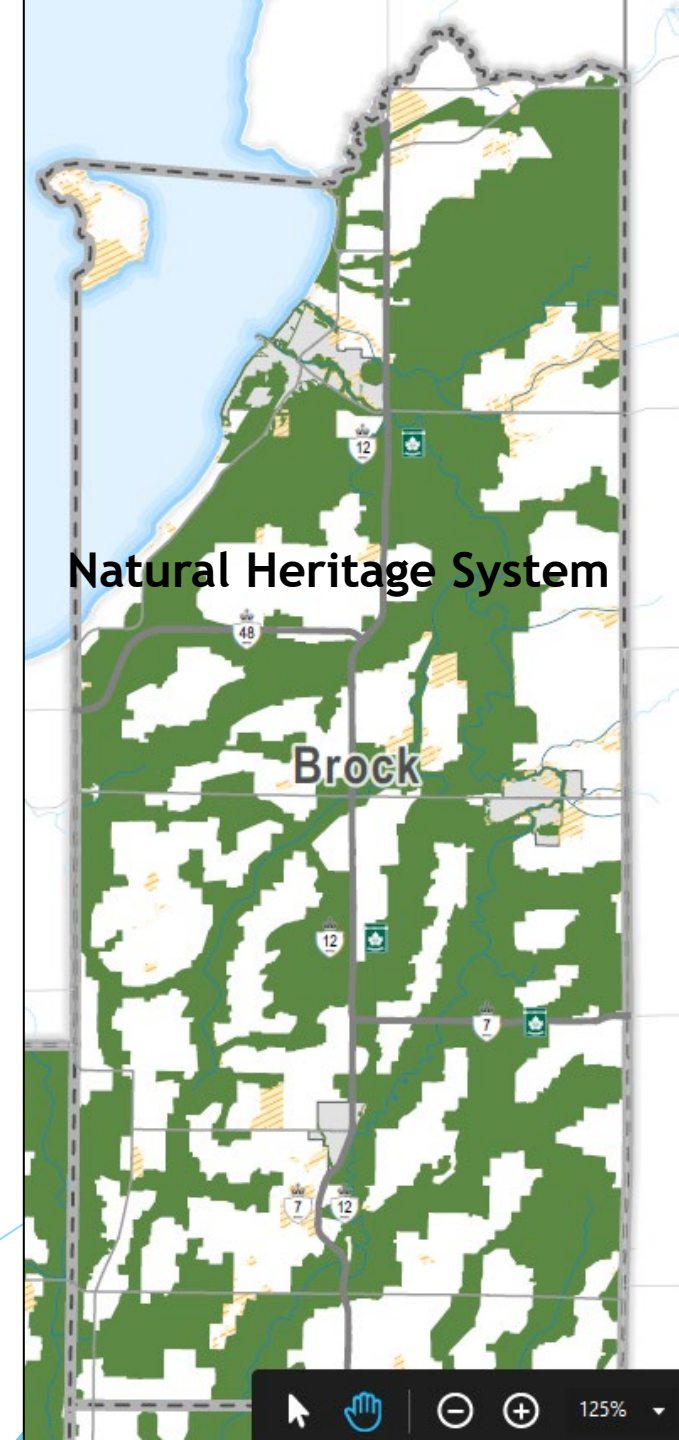
Rural Area

- ▶ Surplus farm dwelling severances
 - ▶ Request confirmation that ROPA no longer required for consolidation of non-abutting farm parcels
- ▶ Request definition for “high potential aggregate resource areas”



Environmental Protection

- ▶ Greenlands System:
 - ▶ Major Open Space Areas
 - ▶ Waterfront Areas
 - ▶ Oak Ridges Moraine
- ▶ Major Open Space Areas
 - ▶ Key natural heritage and hydrologic features
 - ▶ Prime agricultural areas
 - ▶ Rural lands
- ▶ Regional Natural Heritage System



Additional Residential Units

- ▶ Support additional residential units
- ▶ Focus should be on services urban areas as defined in Bill 23
- ▶ Request clarification regarding parking requirements
 - ▶ “...not requiring more than 1 parking space per unit”

Servicing Infrastructure

- ▶ Figure 4 outlines areas developable on private or partial municipal services within urban area (includes Cannington)
- ▶ Request clarification regarding existing uses on private services in Beaverton on Hwy 12
- ▶ Acknowledge servicing constraints in Brock communities
- ▶ SGAs priority for servicing, but request continued investment for northern communities also

Figure 4. – Areas developable on private and/or partial municipal services:

- ▨ Municipal Water, Private Sewage
- ▩ Full or Partial Municipal Service

