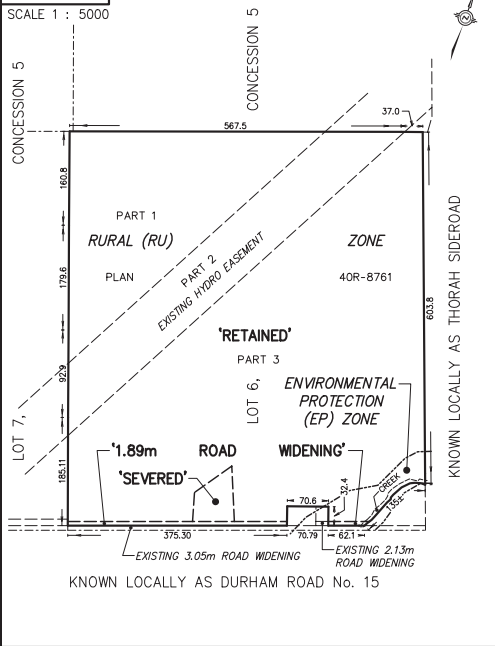


KEY MAP

SCALE 1 : 5000



SKETCH FOR SEVERANCE
B1845 REGIONAL ROAD No. 15
 GEOGRAPHIC TOWNSHIP OF THORAH
 NOW IN THE
TOWNSHIP OF BROCK
 REGIONAL MUNICIPALITY OF DURHAM

SCALE 1 : 300



COE FISHER CAMERON, A DIVISION OF J.D. BARNES LIMITED

© COPYRIGHT 2022

METRIC DISTANCES SHOWN ON THIS PLAN ARE IN METRES AND CAN BE CONVERTED TO FEET BY DIVIDING BY 0.3048.

SUBJECT LANDS

PART OF LOT 6, CONCESSION 5
 GEOGRAPHIC TOWNSHIP OF THORAH
 BEING PIN 72034-0369(LT)
 TOTAL AREA = 40.34± ha. (99.68± ac.)

SEVERED

AREA = 0.492 ha. (1.215 ac.)

1.89m ROAD WIDENING

AREA = 0.083± ha. (0.205± ac.)

RETAINED

AREA = 39.765± ha. (98.26± ac.)

NOTE

BEARINGS AND DISTANCES SHOWN ON THIS SKETCH ARE COMPILED FROM A PRELIMINARY PLAN OF SURVEY BY COE FISHER, CAMERON, A DIVISION OF J.D. BARNES LIMITED (REF. No. 22-17-086-00) AND DEPOSITED PLANS 40R-8761, 40R-11324 AND 40R-14089.

ELEVATIONS

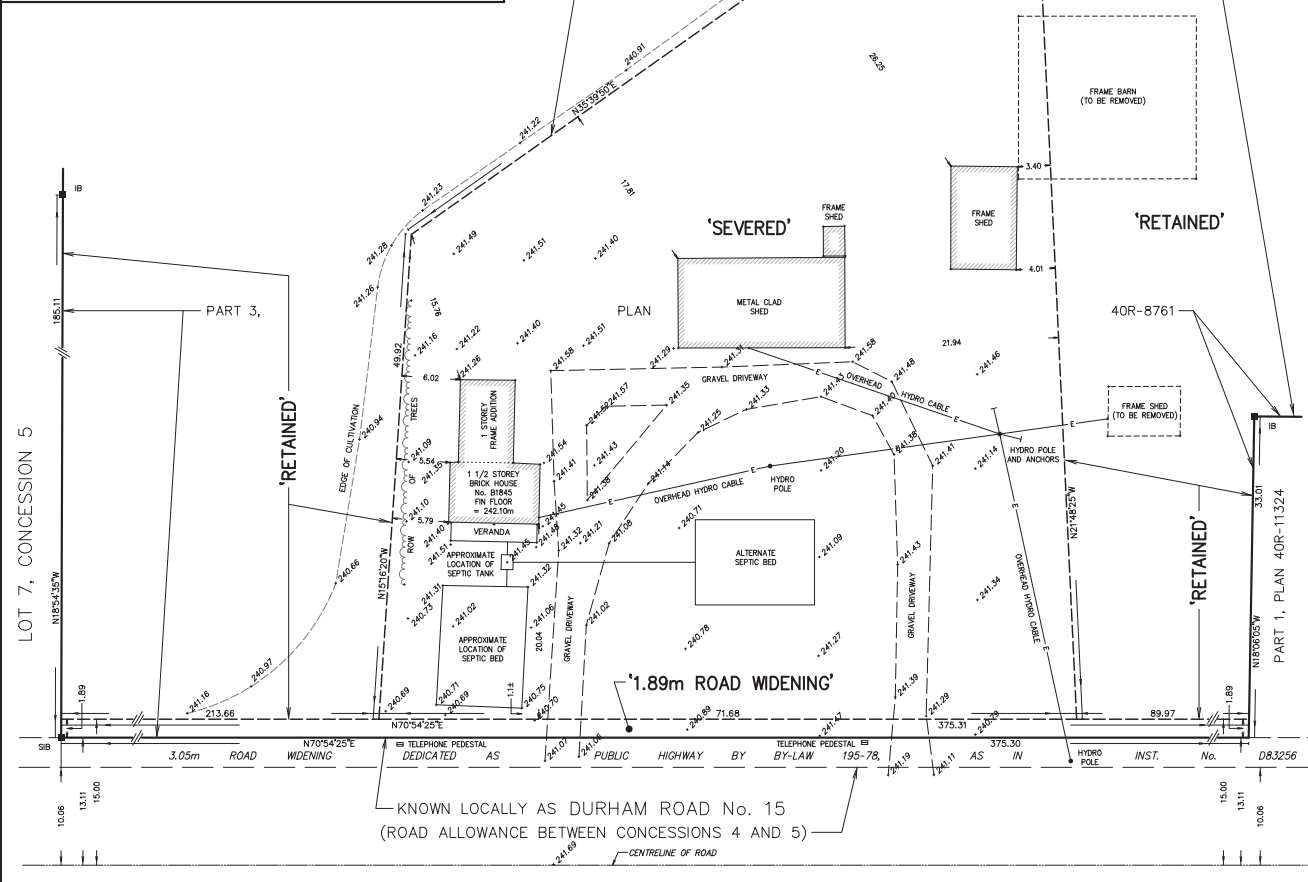
ELEVATIONS SHOWN ON THIS PLAN ARE RELATED TO GEODETIC DATUM AND ARE DERIVED FROM THE MINISTRY OF NATURAL RESOURCES AND FORESTRY BENCHMARK No. 001193003965 HAVING A PUBLISHED ELEVATION OF 247.183 METRES. (CGVD 1928:1978)


CURRENT ZONING:

SEE KEY MAP

CAUTION:

THIS PLAN IS NOT A PLAN OF SURVEY AND SHALL NOT BE USED EXCEPT FOR THE PURPOSE INDICATED IN THE TITLE BLOCK.





COE FISHER CAMERON SURVEYING
 LAND SURVEYORS
 A Division of J.D. Barnes Limited
 3 COMMERCE PLACE, UNIT 201, LINDSAY, ON K9V 6N5
 T: (705) 324-4152 F: (705) 324-8406 www.jdbarnes.com

DRAWN BY: DHT	CHECKED BY: GGH	REFERENCE NO.: 22-17-086-00
PLOTTED: 7/15/2022		DATED: 07/15/2022