

Zoning By-law Amendment (13-2022-RA) B1845 Regional Rd 15

December 12, 2022

A decorative graphic at the bottom of the slide consists of three overlapping, wavy shapes in shades of blue and green, resembling a stylized landscape or water.

Planning in Ontario



Provincial

Planning Act

PPS

Growth Plan

Greenbelt Plan

LSPP

Regional

Regional Official Plan

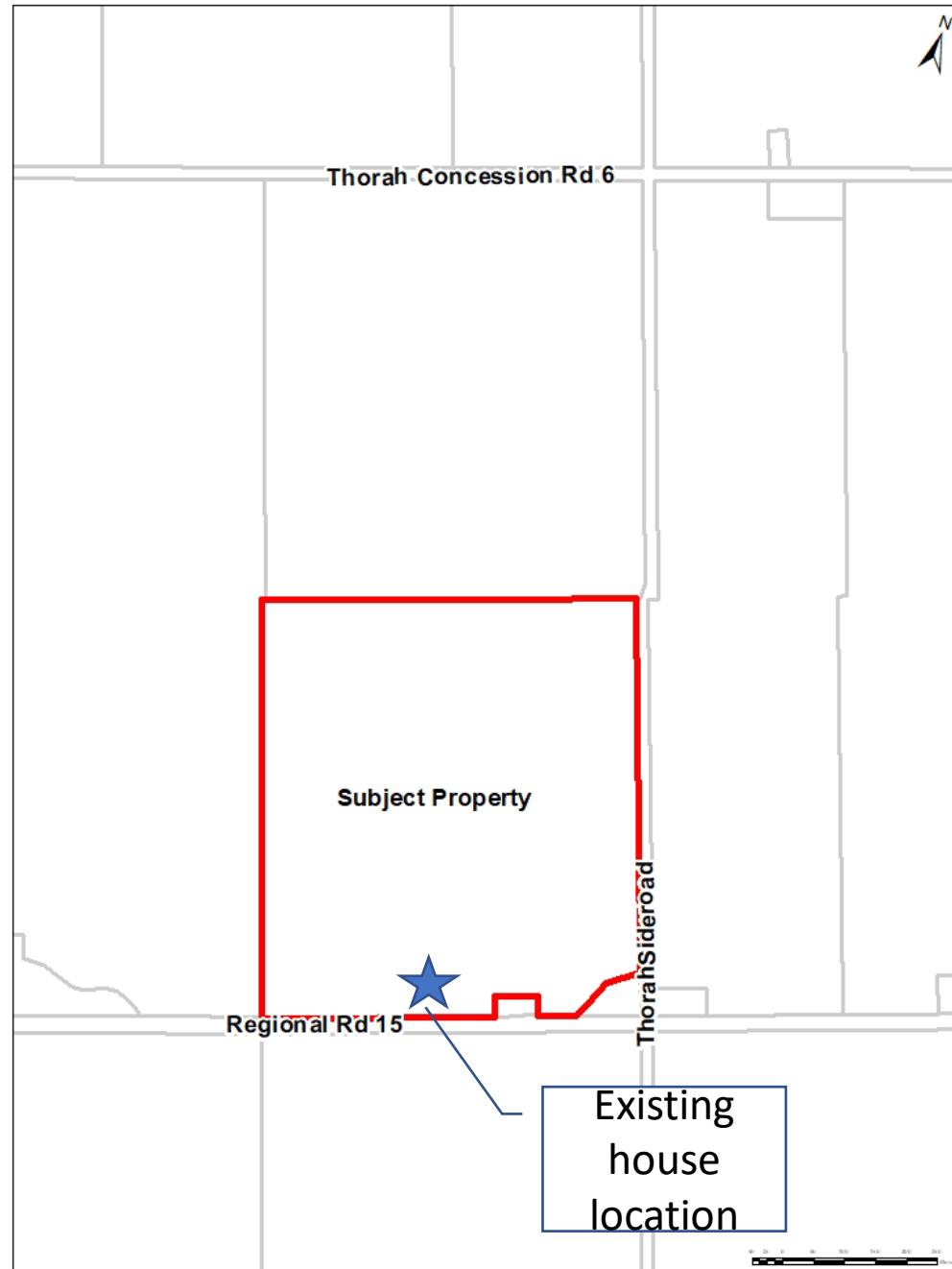
Township

Brock Official Plan

Zoning By-law

Location

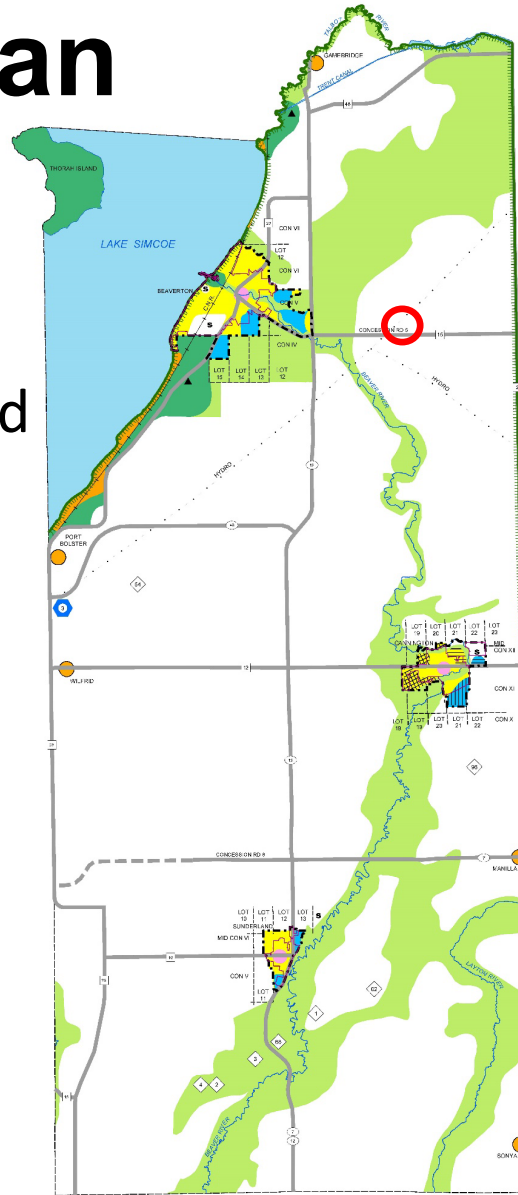
B1845 Regional
Rd 15



Official Plan



Greenbelt Protected Countryside – Prime Agricultural Area



REGIONAL REGION
OFFICIAL PLAN OF THE
REGIONAL MUNICIPALITY
OF DURHAM

SCHEDULE 'A' - MAP 'A1'
REGIONAL STRUCTURE

LEGEND

URBAN SYSTEM

- URBAN AREA BOUNDARY
- REGIONAL CENTRE
- ★ URBAN GROWTH CENTRE
- ◆ REGIONAL CORRIDOR
- LIVING AREAS
- EMPLOYMENT AREAS
- MUNICIPAL SERVICE
- AREAS DEVELOPEABLE ON FULL/PARTIAL MUNICIPAL SERVICES
- AREAS DEVELOPEABLE ON MUNICIPAL WATER SYSTEMS & PRIVATE WASTE DISPOSAL SYSTEMS
- AREAS DEVELOPEABLE ON PRIVATE WELLS & MUNICIPAL SEWERS SYSTEMS
- AREAS DEVELOPEABLE ON PRIVATE WELLS & PRIVATE WASTE DISPOSAL SYSTEMS
- BUILT BOUNDARY

RURAL SYSTEM

- PRIME AGRICULTURAL AREAS

RURAL SETTLEMENTS:

- HAMLET
- RURAL EMPLOYMENT AREA (SEE TABLE E3 FOR DESCRIPTION)
- COUNTRY RESIDENTIAL SUBDIVISION (SEE TABLE E2 FOR DESCRIPTION)
- SHORELINE RESIDENTIAL
- ▲ REGIONAL NODE (SEE SECTION 9C FOR DESCRIPTION)
- ◆ AGGREGATE RESOURCE EXTRACTION AREA (SEE TABLE E1 FOR DESCRIPTION)

GREENLANDS SYSTEM

- MAJOR OPEN SPACE AREAS
- WATERFRONT AREAS
- OAK RIDGES MORANE BOUNDARY
- ▲ TOURIST ACTIVITY / RECREATIONAL NODE
- OPEN SPACE LINKAGE
- OAK RIDGES MORANE AREAS
- GREENBELT BOUNDARY
- ▲ WATERFRONT PLACE
- WATERFRONT LINKS

TRANSPORTATION SYSTEM

SEE SCHEDULE C FOR DESIGNATIONS
THE FOLLOWING IS SHOWN SELECTIVELY, FOR EASE OF INTERPRETATION OF OTHER DESIGNATIONS ONLY.

- | EXISTING | | FUTURE |
|----------|---------------|--------|
| ■ | ARTERIAL ROAD | ■ |
| ■ | FREEWAY | ■ |
| ■ | INTERCHANGE | ■ |
| ■ | GO RAIL | ■ |
| ● | GO STATION | ● |

SPECIAL AREAS

- SPECIAL STUDY AREA
- DEFERRED BY MINISTER OF MUNICIPAL AFFAIRS
- SPECIFIC POLICY AREA
- APPEALED TO O.M.B.
- LANDS APPEALED TO O.M.B. REFER TO POLICY 14.13.7

NOTES:
1. THE OFFICIAL PLAN OF THE REGIONAL MUNICIPALITY OF DURHAM IS A LEGAL INSTRUMENT OF THE REGIONAL MUNICIPALITY OF DURHAM.
2. THE OFFICIAL PLAN OF THE REGIONAL MUNICIPALITY OF DURHAM IS A LEGAL INSTRUMENT OF THE REGIONAL MUNICIPALITY OF DURHAM.
3. THE OFFICIAL PLAN OF THE REGIONAL MUNICIPALITY OF DURHAM IS A LEGAL INSTRUMENT OF THE REGIONAL MUNICIPALITY OF DURHAM.
4. THE OFFICIAL PLAN OF THE REGIONAL MUNICIPALITY OF DURHAM IS A LEGAL INSTRUMENT OF THE REGIONAL MUNICIPALITY OF DURHAM.
5. THE OFFICIAL PLAN OF THE REGIONAL MUNICIPALITY OF DURHAM IS A LEGAL INSTRUMENT OF THE REGIONAL MUNICIPALITY OF DURHAM.
6. THE OFFICIAL PLAN OF THE REGIONAL MUNICIPALITY OF DURHAM IS A LEGAL INSTRUMENT OF THE REGIONAL MUNICIPALITY OF DURHAM.
7. THE OFFICIAL PLAN OF THE REGIONAL MUNICIPALITY OF DURHAM IS A LEGAL INSTRUMENT OF THE REGIONAL MUNICIPALITY OF DURHAM.
8. THE OFFICIAL PLAN OF THE REGIONAL MUNICIPALITY OF DURHAM IS A LEGAL INSTRUMENT OF THE REGIONAL MUNICIPALITY OF DURHAM.
9. THE OFFICIAL PLAN OF THE REGIONAL MUNICIPALITY OF DURHAM IS A LEGAL INSTRUMENT OF THE REGIONAL MUNICIPALITY OF DURHAM.
10. THE OFFICIAL PLAN OF THE REGIONAL MUNICIPALITY OF DURHAM IS A LEGAL INSTRUMENT OF THE REGIONAL MUNICIPALITY OF DURHAM.

Proposed Zoning

Current:

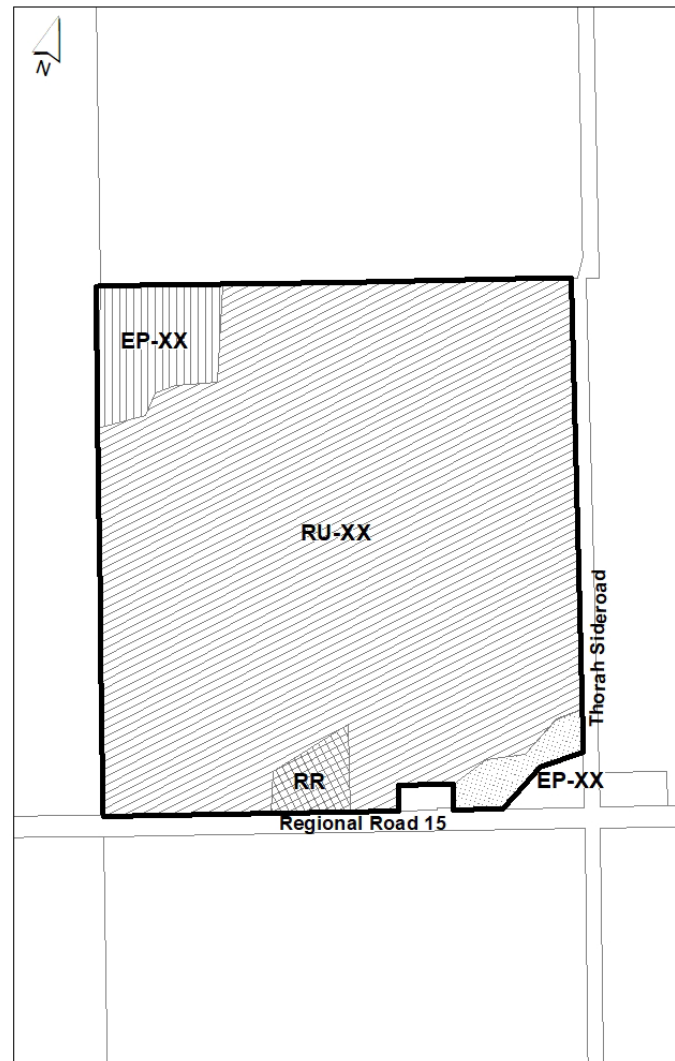
RU & EP

Proposed:

RR

RU-XX

EP-XX



<p>From EP to EP-XX From RU to RR From RU to RU-XX From RU to EP-XX</p> <p>0 25 50 100 150 Meters</p>	<p>This is Schedule "A" to By-law No. XX-2022</p> <p>Passed this XX day of XX, 2022.</p>	<p>Key Map</p>
---	--	----------------

For More Information or to Submit Comments

Robin Prentice, MCIP, RPP
Director of Development Services
Robin.prentice@brock.ca
705-432-2355 ext.235