

**Draft Plan of Subdivision
(S-B-2025-01) &
Zoning By-law Amendment
(ZBA-2025-02)
276 Cameron St E**

June 23, 2025

A decorative graphic at the bottom of the slide consists of three overlapping, wavy shapes in shades of blue and green, resembling a stylized landscape or water.

Land Use Planning Framework



Planning Act

Provincial
Level

Provincial Policy/Planning Statement
(PPS)

Provincial Plans
(i.e. Greenbelt Plan)

Envision Durham Official Plan

Municipal
Level

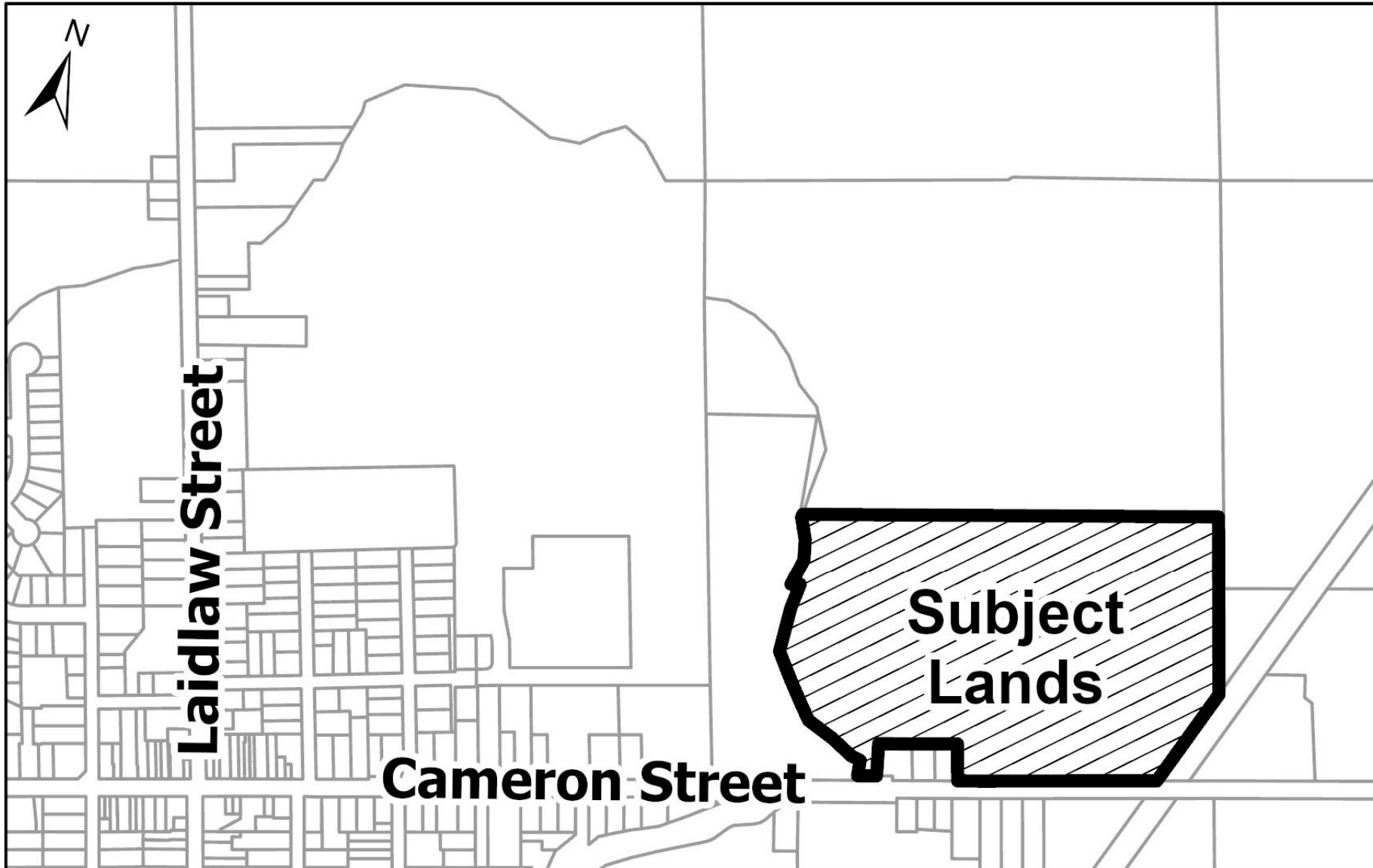
Township Official Plan

Zoning By-law

Location

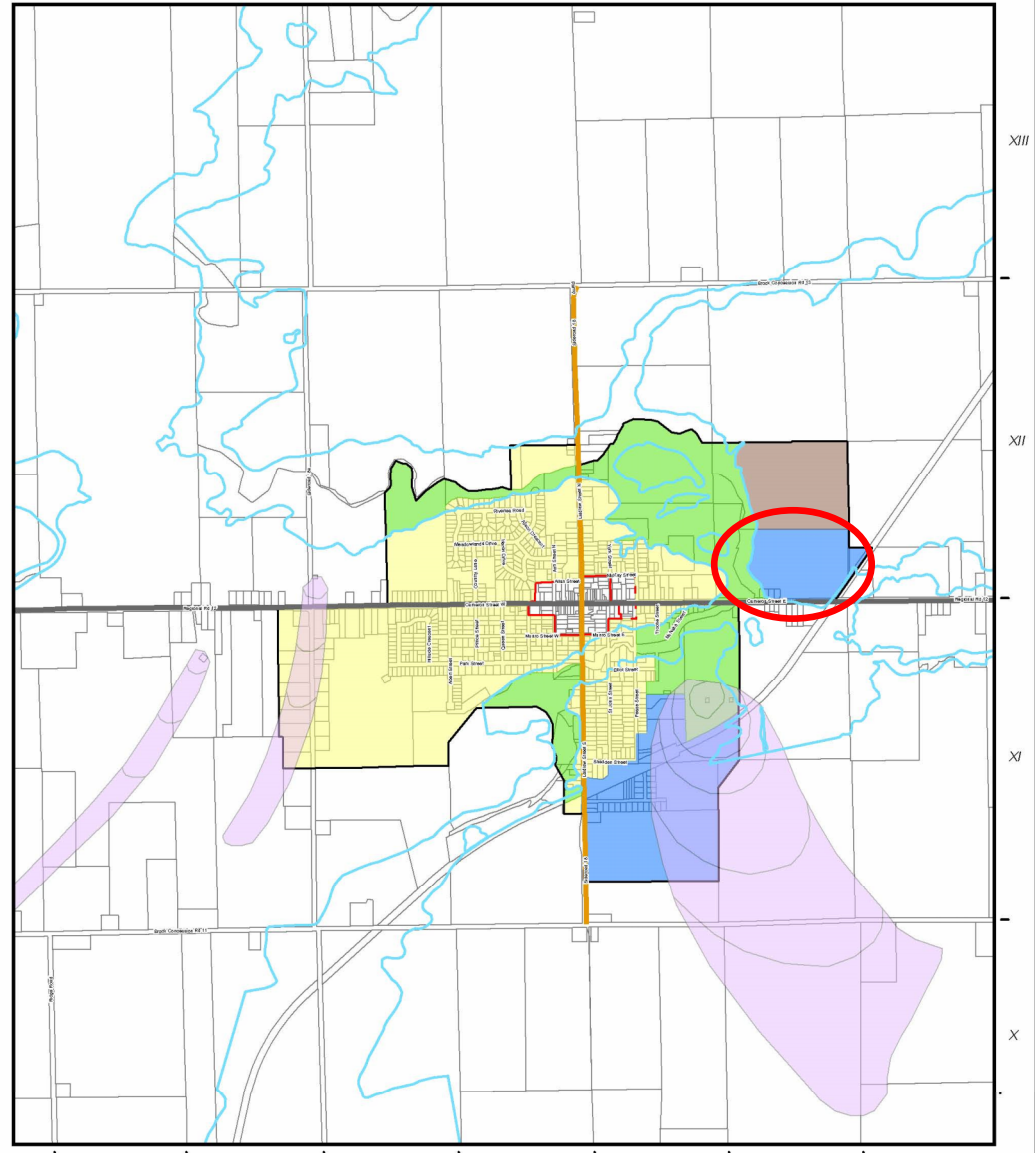


276 Cameron St E, Part of Lot 22, Concession 12 (Cannington)



Official Plan

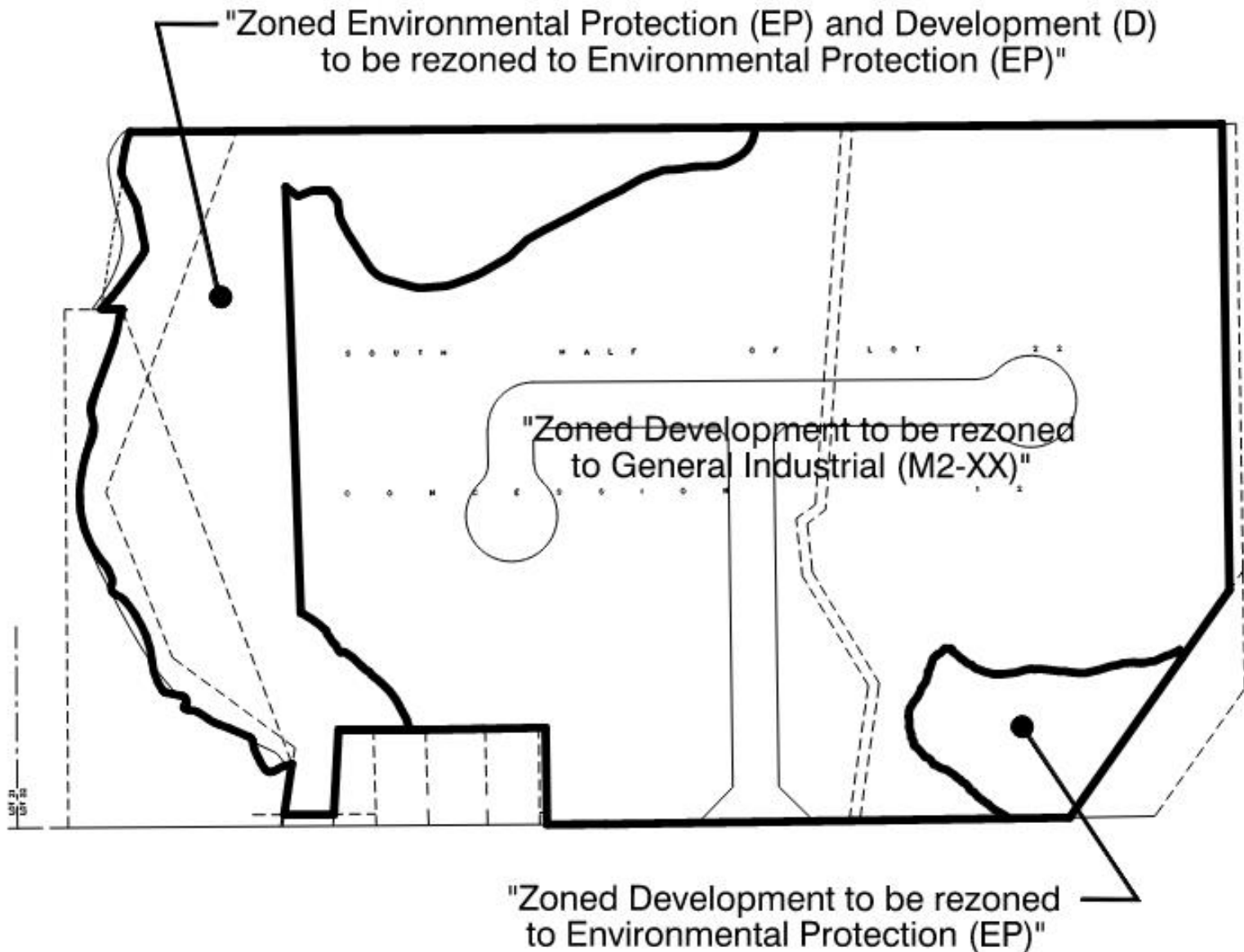
Cannington Urban Area – Employment Area



- Arterial Road
- Collector Road
- Local Road
- Floodplain Area
- Assessment Parcels
- Brook Wellhead
- Urban Area Boundary
- Mixed Use Corridors
- Employment Area
- Regional Centre
- Regional Centre Expansion
- Residential Area
- Open Space
- Utility

Digital cartography by The Regional Municipality of Durham, GIS Services, Assessment Parcels, © 2004 MPAC and its suppliers. All rights reserved. May not be reproduced without permission. This is not a Plan of Survey.
DISCLAIMER - This map has been produced from a variety of sources. The Region of Durham does not make any representations concerning the accuracy, likely results, or reliability of the use of the materials. The Region
heavily relies on the representations and warranties. ACCORDING TO THE LEGISLATION, Flood Plan Mapping provided by Lake Simcoe Region Conservation Authority.

Zoning



Zoning



The following uses are proposed as permitted uses:

- Assembly hall/auditorium
- Bank
- Builder's Supply Dealer
- Bulk storage tanks
- Business/Professional Office (accessory to a primary use)
- Cold Locker Storage
- Contractor's Yard
- Custom Workshop
- Dairy
- Dry Cleaning Plant
- Eating Establishment
- Equipment Sales or Rental
- Farm Implement Dealer
- Feedmill
- Landscape Contractor
- Manufacturing, processing, assembling and/or fabricating plant
- Marine Sales & Service
- Motor Vehicle Body Shop
- Motor Vehicle – Dealership
- Motor Vehicle – Gasoline Bar
- Motor Vehicle – Sales & Service
- Motor Vehicle – Service Station
- Motor Vehicle – Car Wash
- Government works yard
- Open Storage (accessory use)
- Printing Establishment
- Private Club
- Public Use
- Retail commercial establishment (accessory use)
- Salvage Yard
- Truck Transport Terminal
- Warehouse
- Wholesale establishment (accessory use)

For More Information or to Submit Comments

Robin Prentice, MCIP, RPP
Director of Development Services
Robin.prentice@brock.ca
705-432-2355 ext.235