



One System.  
Best Health.

# Lakeridge Health Update to the Township of Brock

September 9, 2024



Lakeridge  
Health

# Durham Region's Integrated System of Care



# 2024/2025 Annual Priorities



**Improving Access  
and Experience**

**Zeroing in on Safety**

**Supporting Our People**

**Healthy Finances**

# Increasing Access to Primary Care: Queen's-Lakeridge Health MD Family Medicine Program



## How this med school is trying solve the family doctor shortage

13 days ago | [News](#) | 7:31

Canada is losing its family physicians to burnout and it's creating a primary care crisis. Can a new program that prioritizes family doctor recruits help solve the shortage? The National's Nick Purdon gets special access to Queen's University and Lakeridge Health's medical school program to see how it is preparing students for the realities they'll face on the job.



Lakeridge Health

MD Family  
Medicine Program

# Increased Access to Cutting-Edge Care, Close to Home

Photo courtesy:  
Ryan Walker Photography



- Da Vinci Surgical Robot at Lakeridge Health, first operation April 4th, 2023.
- Until last year, robotic surgery was unavailable between Toronto to Kingston.
- In fall 2023 we began to offer CT scanning services at Port Perry Hospital.
- In early 2024, Lakeridge Health welcomed Durham Region's first PET CT scanner.
  - We expect to welcome the first patient later this fall.

# Building an Integrated System of Care for Durham Region



## New Hospital for Durham Region:

- Ministry provided funds for the planning grant to proceed with the site identified in Whitby.



## Bowmanville Hospital Redevelopment:

- Planning and community engagement is now a focus with Stantec.
- Temporary helipad now operational.



## Jerry Coughlan Health & Wellness Centre:

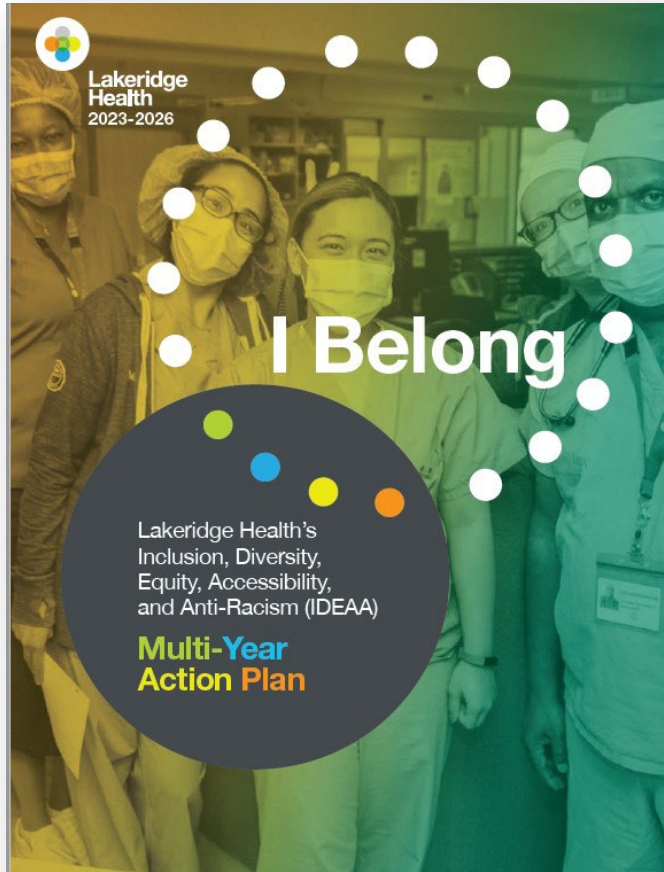
- Now open!



## Lakeridge Gardens:

- Celebrated the second anniversary this year.
- Looking to the future: new vision for senior's care across Durham Region including Port Perry.

# Fostering an Inclusive Environment for All Through *I Belong*



## “I Belong” – Lakeridge Health’s new Inclusion, Diversity, Equity, Accessibility, and Anti-Racism Multi-Year Action Plan

- We have made great strides in our IDEAA efforts, putting initiatives in place to address system inequities.
- Over the next three years, this plan will set the foundation and embed an IDEAA lens into everything we do.
- From the moment we begin caring for a patient, or the first day someone joins our team, we want each person to be able to say, “*I belong at Lakeridge Health.*”

# Coordinating and Integrating Mental Health and Addictions Services



- Lakeridge Health continues to advance its three-year plan *Together, Best Mental Health* towards a coordinated and integrated mental health and substance use services model in Durham Region.
- Impacts of the challenges related to mental health and addictions affect residents and businesses.
- As part of our mental health plan, *Together, Best Mental Health* we launched:
  - Central Connect, a centralized referral model that makes it easier to access mental health services in Durham Region.
  - We are working with the Emergency Department (ED) to bring wrap around, mental health supports to the Oshawa ED.





# Vision for a Coordinated System of Mental Health and Addictions Care

- Lakeridge Health envisions a coordinated system of care to address mental health and addictions (MHA) challenges in Durham Region to ensure people can access the right level of care, at the right time.
- Our vision includes strong partnerships and the creation of a:
  - MHA Urgent Care Clinic
  - MHA Emergency Department (ED)
  - MHA ED After-Care Team
- Current space is available.
- Working with our provincial government partners on securing the funding to realize our vision.

