

Cannington Seasonal Parking Lot – Beaver River Wetland Trail

Brock Township Council

November 27, 2023

Dan Andrews



Lake Simcoe Region
conservation authority



Member of Conservation Ontario

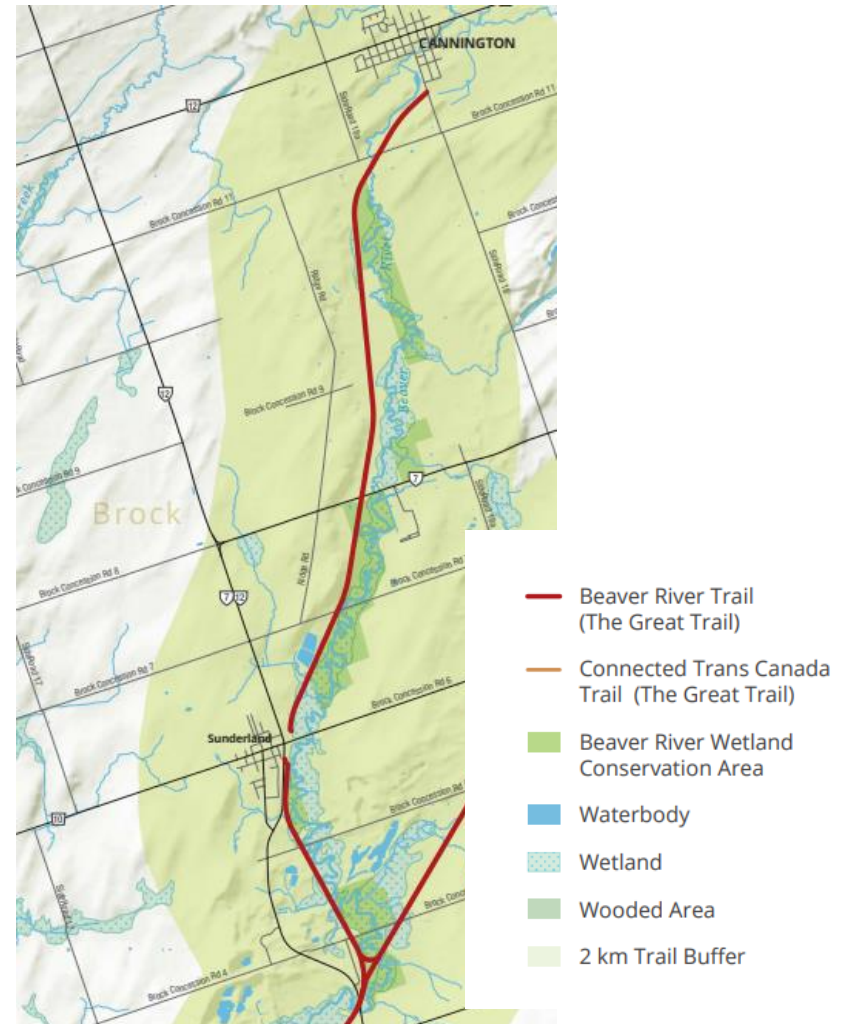
Topics to Cover

1. Overview of the Beaver River Wetland Trail
2. Challenge: Lack of Parking at Trail entrances
3. Conservation Area Management Plan Public Input
4. Parking Lot Study and Findings
5. Phase 1: Parking Lot for Cannington Trailhead
6. Future Parking and Related Phases



1. Brief Overview of the Trail

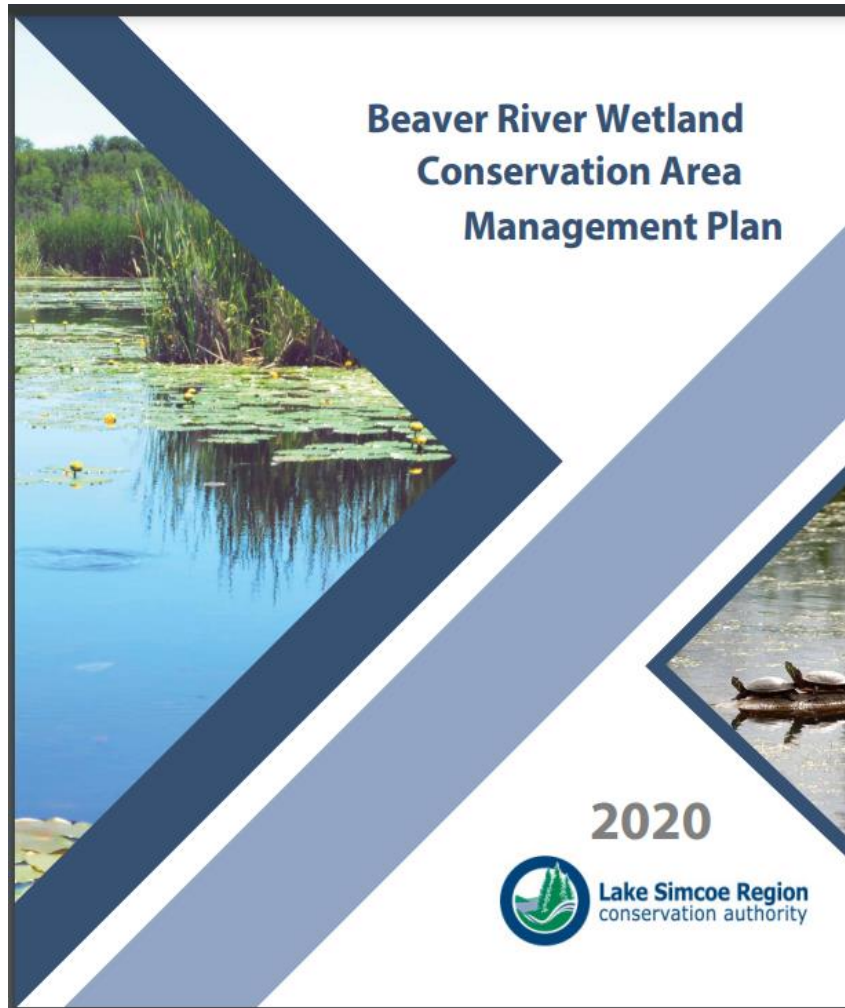
- Former T&NR Corridor
- Connects Blackwater, Sunderland and Cannington
- 13km owned by Conservation Authority
- Trail completed in 2015
- 5,000 users/year
- No Trailside Parking



2. Challenge: Lack of Parking at Trail Entrances



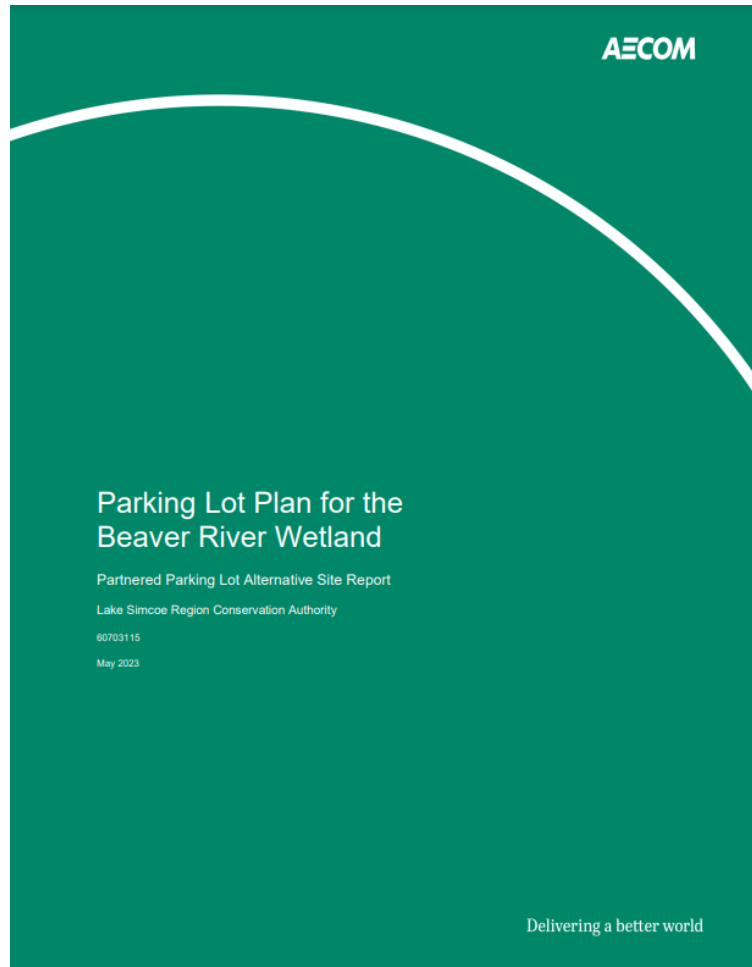
3. Management Plan Public Input



Conservation Authority:

- Construct accessible parking spaces
- Seek funding
- Collaborate with partners

4. Parking Lot Study and Findings



Conservation Area Options

- Blackwater
- Sunderland
- Highway 7/Trail

Other Public Land Options

- Cannington

4. Parking Lot Study and Findings

- Increase accessibility on trails
- Use existing regional transportation networks to improve access



4. Parking Lot Study and Findings

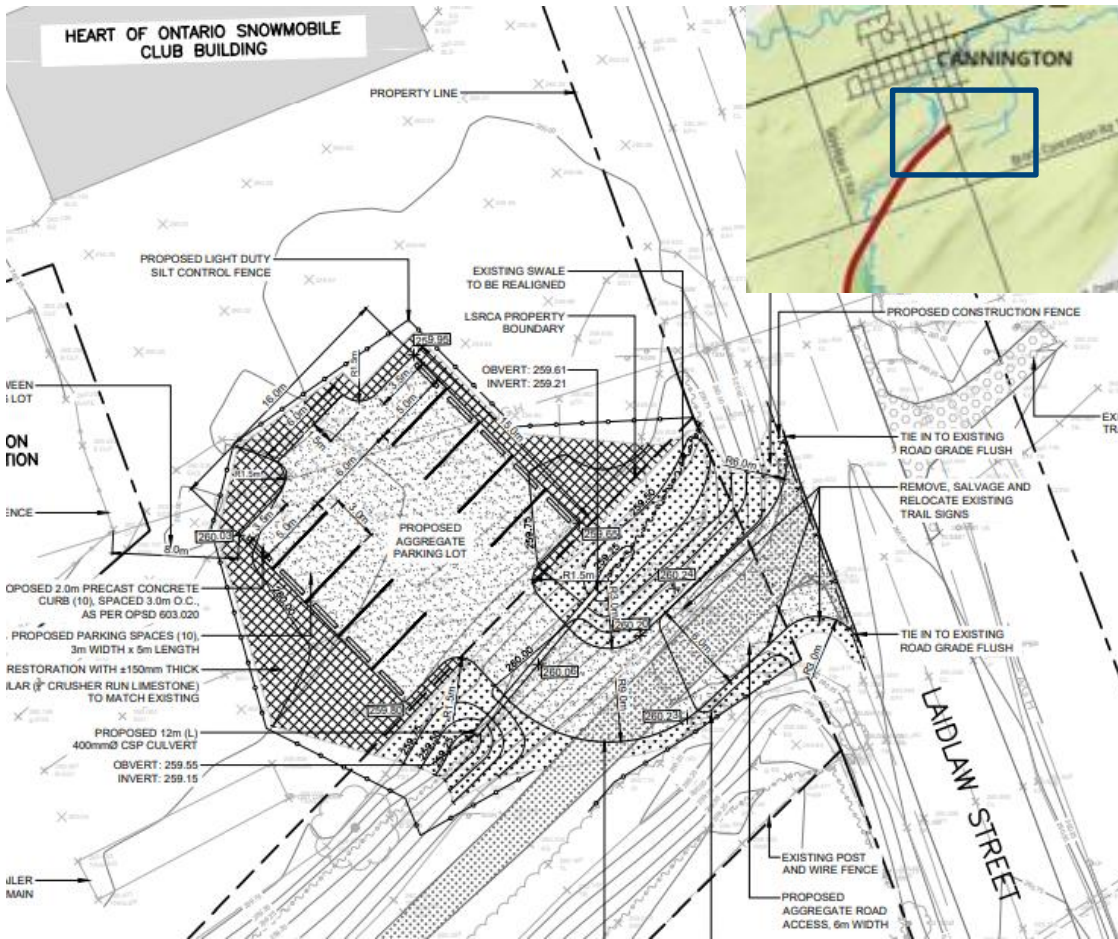
Site	Cost	Weighted Scoring /500
Blackwater Junction	\$53,465	325
Sunderland – Hwy 7/12	\$35,177	235
Highway 7B	\$374,513	170
Cannington – 221 Laidlaw	\$33,832	335

4. Parking Lot Study and Findings



211 Laidlaw Street South Cannington

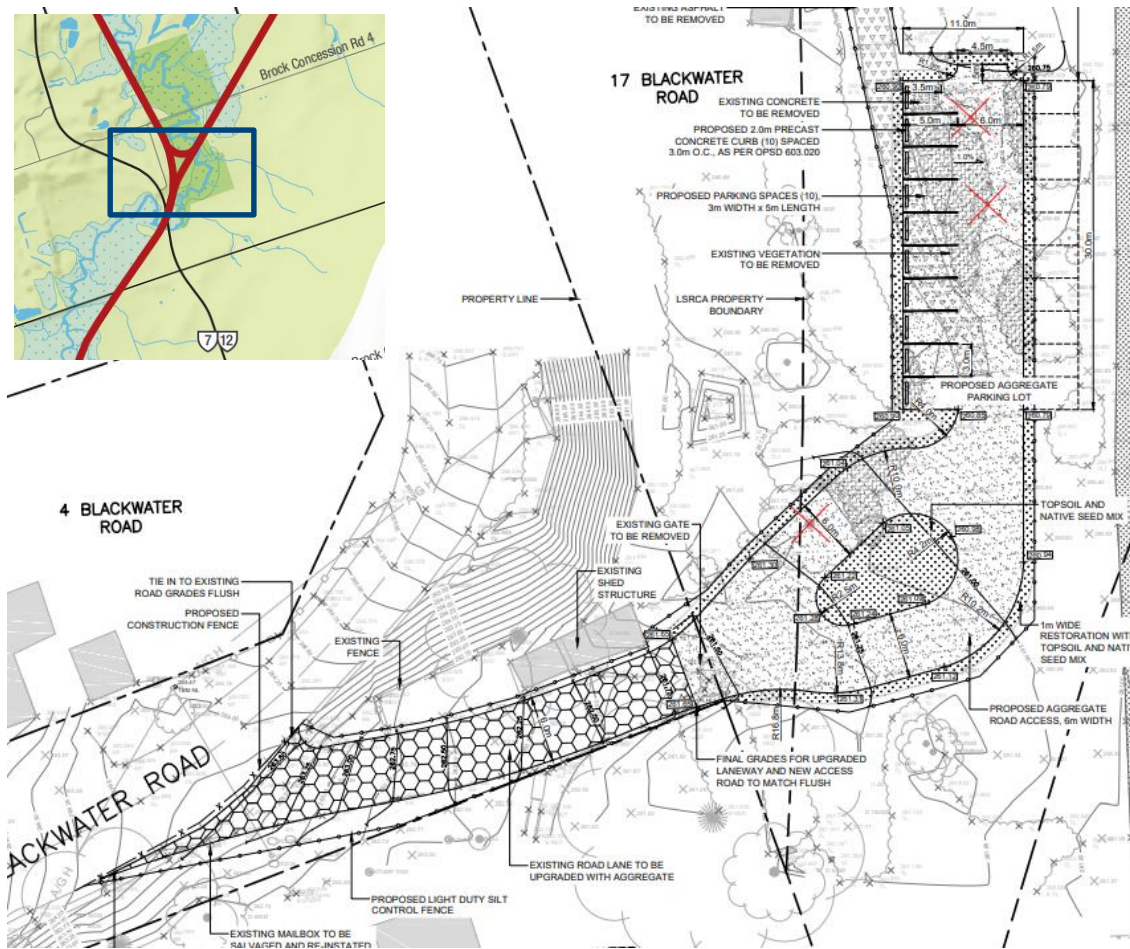
5. Phase 1: Parking Lot Cannington



Conservation Authority:
Capital Funding & Build

Co-maintain:
Conservation Authority & Brock Township

6. Next Steps and Phases



Conservation Authority:
Capital Funding & Build

Co-maintain:
Conservation Authority & Brock Township

Summary

Conservation Authority is seeking Council support for Brock Township staff to:

- Continue to collaborate with the Conservation Authority on parking lot development
- Draft an agreement or similar for the establishment of seasonal parking lots at:
 - 211 Laidlaw Street South, Cannington and
 - Blackwater Junction
- Support Conservation Authority led funding initiatives for Parking Lot development and maintainance.



Thank you

