

# Beaverton Waterfront Plan



## What We Heard #1

### Summary



April, 2023



TCI Management Consultants

Baird

PLAN B Natural Heritage



# Contents

- 1 **Introduction** ..... 3
- 2 **What We Heard** ..... 5
- 3 **Information Session #1** ..... 7



Study Area for the Area 2 Secondary Plan Update

# 1 Introduction

The Township is working on a Waterfront Plan that will provide a long-term vision for the waterfront on Lake Simcoe and the open space lands that connect Downtown Beaverton to the harbour on Lake Simcoe. The Waterfront Plan will make recommendations for the short, medium and long term to strengthen the role of the waterfront as a community and recreation hub; stimulate tourism and economic development; increase connections to Downtown Beaverton; and ensure its continued vitality for future generations.

The Waterfront Plan will be prepared within the context of broad based community input during each phase of the work. During the first phase, input was sought on ideas for change and issues/concerns that the team should be aware of. This document summarize what we've heard over the past two months during one on one conversations with residents, councillors and the mayor and the first community workshop.

The next stage in the process is for the team to co-create scenarios for change in each of the five focus areas with the community at a design workshop scheduled for Thursday, April 20, 2023.



# 2 What We Heard

The community was invited to schedule a one-on-one conversation with the team's project manager to discuss ideas for the waterfront. During February and early March, 15 conversations were held with residents, councillors and the mayor and comments were made through the dedicated project web page. In addition, the team reviewed the results of a Stakeholder Engagement

Workshop held in 2022 to gather input for the Terms of Reference guiding this Waterfront Master Plan. The following is a summary of the what we heard during the conversations and emails, and from our review of the Workshop proceedings and summaries from the Harbour Committee.

### 1 Sculpture

people like it, people don't like it, not on the waterfront, on the pier, needs to be installed this year, needs to be considered in the context of the Harbour/Open Space Plan

### 2 Pedestrian bridge

yes, no, use floating docks, will be too expensive, need it in case there's a train derailment, will be an attraction for people to walk the waterfront

### 3 Business opportunities

kayak rental, bike rental, lessons, tourist focused retail seasonal/pop up retail, restaurant, invite downtown businesses to open waterfront pop up, ice cream, something open in the evening, more events/markets

### 4 Sports fields

better location elsewhere, lots going on providing activity on the waterfront, redevelop the fields for another use, leave as is because it's well used

### 5 Parking

pay for parking, do not support paying for parking will keep people from staying longer, have enough parking, not enough parking, don't provide dedicated parking for particular groups

### 6 Boat Houses

sell the land to boat house owners, remove the boat houses, boat house owners have spent a lot of money upgrading buildings/invested in the harbour; Conservation Authority may not permit new uses if no boat houses

### 7 Beach

poor water quality causes beach closure, huge attraction, must have swimming, close swimming and build boardwalk with swimming platforms in lake

### 8 Boating

need more transient docking, need a breakwater to protect docks, better management of launch, don't charge enough money to launch, harbour dredging

### 9 Pedestrians

better walkway to connect downtown to harbour, better signage, more seating

### 10 Washroom

improve washroom, need changerooms, perhaps tourist information, accessible





# 3 Information Session #1

The first Community Information Session was held on Wednesday, March 8, 2023 at the Foster Hewitt Memorial Community Centre. Approximately 70 people attended the workshop that included an introductory presentation to summarize the five focus areas, what we've learned so far about existing conditions, what we've heard so far and to introduce the purpose of the session.

Participants were invited to sit with others as 12 table groups to share input on each of the five focus areas with respect to the biggest opportunities for change and the key issues or concerns that team should be made aware of. The following is a summary of the ideas shared on the note taking templates and input also provided in supplementary written submissions to the team.

## Beaverton Harbour

### What are the Biggest Opportunities for Change?

#### Recreation/Events

- Provide a safe and clean place to swim/play
- Provide more events: sailing regatta, fishing derby, bring back the steam boats
- Skating path on the lake

#### Access

- Provide more parking/remove parking at Barney's/ include dedicated spaces for people with disabilities/angle parking/encourage people to park downtown and walk
- Prohibit road traffic to lake in summer
- Walkway/ bridge to Ethel park
- Keep free parking
- Wident the boardwalk

#### Pier/Harbour/Boating

- Repair the north spit/pier, provide access and enhance the landscape
- Restore the South Pier: wider promenade, lighthouse
- Replace swimming platforms
- Dredge harbour, provide a breakwall to reduce waves
- Better boat launch

#### Amenities

- Improve public washrooms
- Picnic shelter
- Outdoor /aqua theatre
- Museum
- Fish cleaning station

#### New Businesses

- Provide for more vendors, dining, outdoor patios, shops, bait shop, rentals(temporary or permanent); beautiful sunset
- Food trucks

#### Other Opportunities

- Create a destination in the Harbour
- Provide more signage and notices for events
- Move/replace/rebuilt water treatment plant
- Increase green space, save natural habitat, plant native trees
- Buy private land
- Leave boathouses / Remove boathouses to provide redevelopment opportunities
- Dog park
- Coordinated look to boathouses

## What are the Key Issues/ Concerns to be Aware of?

- Remove long term tenants
- Lack of land/Region owns prime waterfront
- Parking
- Not flat
- Do we have the tax base for this project?
- Careful about ice run off
- Washrooms are outdated and poorly located
- Accessibility
- Parking location VS launch for boats
- Water quality – swimming
- Kayak launch dock – takes up too much space
- Depth of harbor dredging
- Conservation Authority will not allow any redevelopment of boathouse area, why include. Boathouse owners are needlessly worrying
- Boathouses add to community. Let boathouse owners buy land
- Lack of transient boat slips
- Revisit sailing school on north beach
- Thorah Island was included in previous study – excluded – why?
- Minimal spots for boats
- The Wishing Tower should not be in the Harbour area

## Beaverton Fairgrounds

### What are the Biggest Opportunities for Change?

#### Access

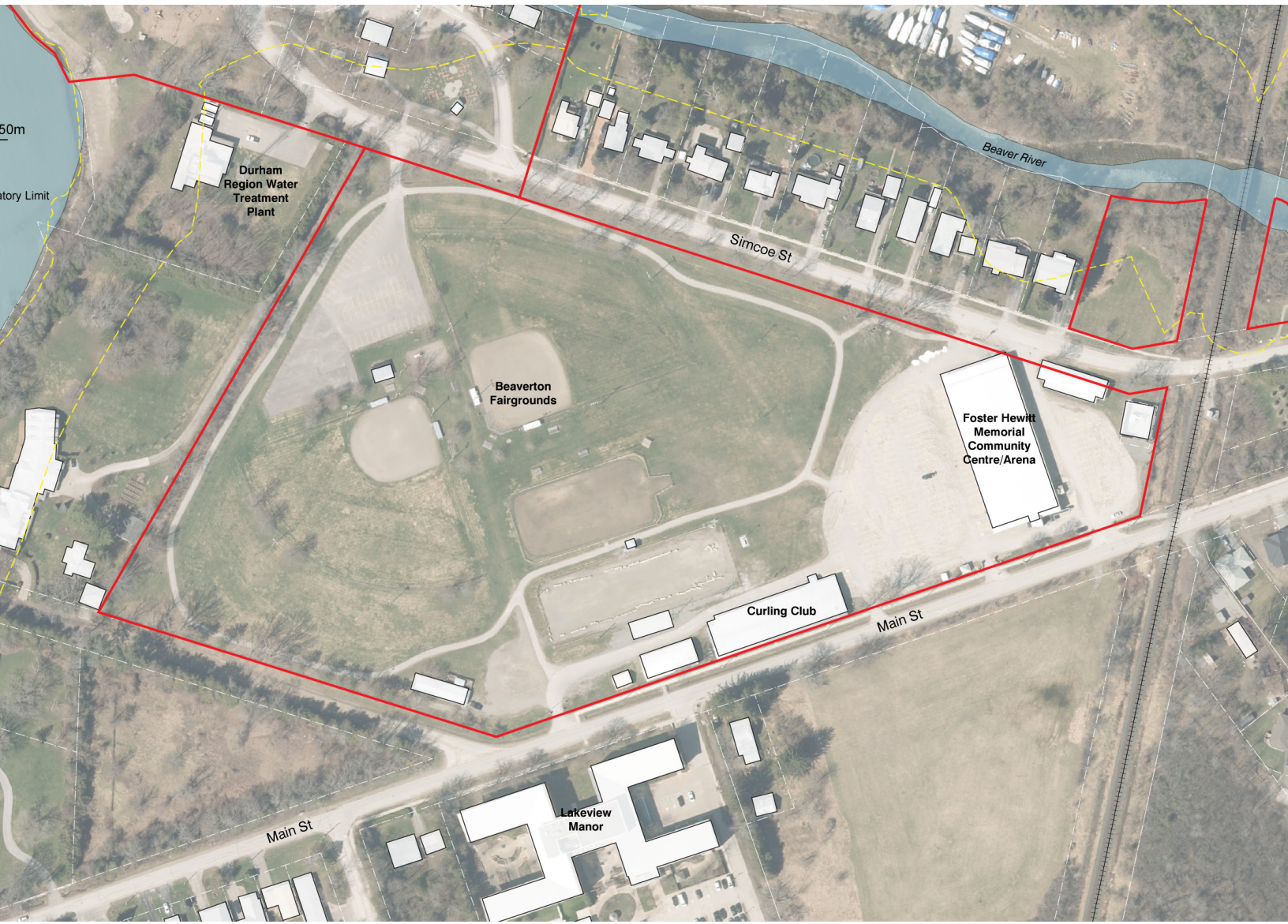
- Provide more parking, included dedicated spaces for people with disabilities
- More or developed areas for special occasions sports fields, love the boat launch parking
- Charge for parking for tourists/don't charge for visitor parking. Have a pass for residents
- Add solar lighting to Lions Loop
- Incorporate the fair grounds with the waterfront section through a trail link

#### Recreation/Activities

- Revamp playground
- Add grandstands, amphitheatre – concerts by the lake
- Keep ball diamonds as is

#### Amenities

- Washrooms
- Provide more attractions: an outdoor rink + rink shack, pickle ball court, camps, food trucks, dog park, horse back riding, dirt bike/ BMX or ATV course,
- Build a Recreation facility where the arena is and include indoor swimming pools
- Relocate the ball diamonds, Redevelop / configure the site to best use / potential, condos?
- More benches
- Move the community centre - build mixed use facility in another location (e.g. 5th/ Osborne)
- Connect to Lakeview Manor with more facilities for seniors



## Simcoe St Railway Parcels

### What are the Key Issues/ Concerns to be Aware of?

- Police sub station
- Fence – tear down to be welcoming
- Agreement with Agriculture Society to change/develop
- Function VS appeal – can it be beautified and meet function of park
- Accessibility/ path from parking lots to harbour (winter traffic – sleds/ fishing) and boaters parking
- Parking in general vs. user groups parking at fairgrounds (Ball, Arena, Curling Club etc.)
- No parking in ball diamonds during fall fair
- Increase parking using that little green space of curling club

### What are the Biggest Opportunities for Change?

#### Access

- Walkway and bridge to Ethel Park
- Dedicated parking for people with disabilities
- Walkway & bridge
- Connection to Mill Gateway Park

#### Other

- Northlander station; rebuild with a café or reinstate for commuter travel
- Railway related monument
- Ability to purchase “Fox Park” from Conservation Authority

#### Amenities

- Gardens
- Naturalization areas

#### Other Ideas

- Dredging Beaver River to downtown canal
- Bird houses
- Art

### What are the Key Issues/ Concerns to be Aware of?

- Railway
- Connecting to downtown/ harbour
- Small size, location to tracks
- Not accessible to riverfront
- Gas and water mains





# Mill Gateway Park

## What are the Biggest Opportunities for Change?

### Access

- Dedicated parking for people with disabilities
- Sidewalk along Simcoe Street
- More lighting at the park and sidewalk
- Pedestrian bridge across river
- Connect to Fox Park

### Recreation/Events

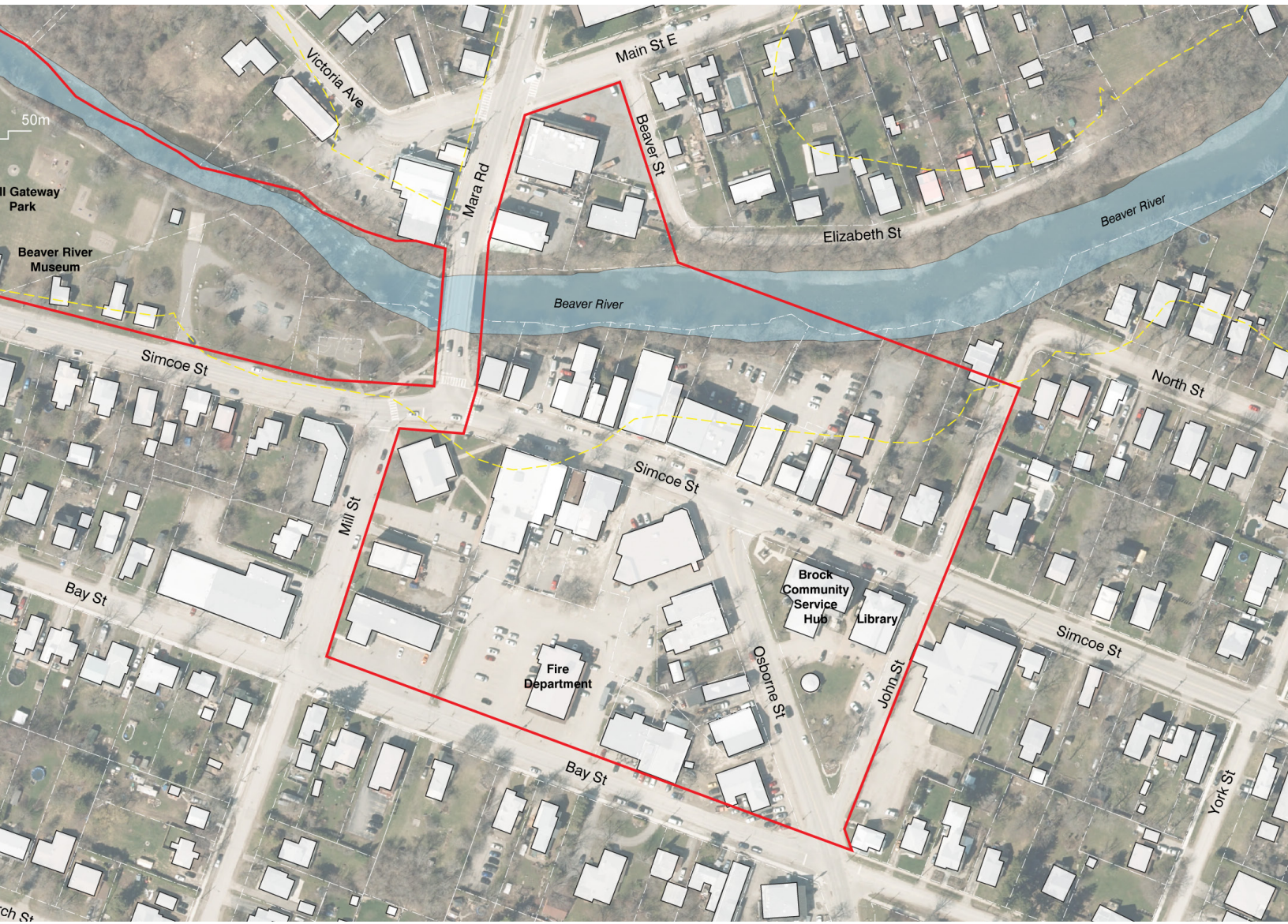
- Signs for events
- European football pitch; add goal posts in the green area
- Christmas light display in the park
- Indoor pool/ exercise facility – similar to “abilities centres in Durham Region”
- Expand Beaverton library hours of operation and # of days open
- Bike rental, fitness stations
- More benches
- Amphitheatre
- Fitness/workout stations

### Other Ideas

- Location for food bank donations
- Dam the river at Mara Rd. for more access to the river for canoes and kayaks
- Buy property on the north side of river
- more police surveillance
- Hanging baskets by historical buildings

## What are the Key Issues/Concerns to be Aware of?

- Need lighting
- Sidewalk
- Drugs
- No public washrooms
- Ownership of land
- Skate park is a bit modular





# Downtown Beaverton

## What are the Biggest Opportunities for Change?

### Access

- Dedicated parking for people with disabilities, free parking retained
- Walkways
- Boardwalk along river behind stores
- Better access from parking lots to downtown
- Bike lanes to connect all areas and bike repair stations
- Opportunity to widen bridge for multiple types of traffic and to “beautify” new build
- Reduced parking on street can increase pedestrian traffic
- Trolley to waterfront
- River lift trek – similar to ski lift to connect downtown to waterfront
- Covered bridge

### Outdoor Spaces and Landscape

- Patios along Simcoe
- Landscaping upgraded
- More street furniture/ permanent planters
- Diversity the vegetation to connect downtown to the fairgrounds and the waterfront

### Other Ideas

- Better signage
- Access to groceries, doctors
- Sell/ lease land
- Façade improvements
- Better guidelines for buildings. CIBC does not fit with historical nature of town
- Downtown carousel
- Farmers market
- Trolley to waterfront

## What are the Key Issues/ Concerns to be Aware of?

- Only one accessible parking spot in front of post office
- Speeding – need stop sign at 3 corners
- Very difficult to make left turn from Cosborne to cross street
- Funding, budget. Do we vote on project?
- Ownership of land
- The condition of bridge and side of sidewalks
- Removing old dam changed historic “Beaverton water flows”
- Lack of green space
- Public washrooms
- Business hours are not consistent and many are not open.
- Music in the park
- Taste of Beaverton
- Theatre
- Approx. 7 years ago a plan was started to implement improves the downtown are and nothing has been done
- How are the owned properties affected?

# Beaverton Waterfront Plan



TCI Management Consultants  
Baird  
PLAN B Natural Heritage