



Township of Brock Interoffice Memorandum

To: Mayor and Members of Council
From: Fernando Lamanna, Clerk & Deputy CAO
Subject: Durham Student Transportation Services School Crossing Relocation.
Date: Monday, August 14, 2023

The purpose of this memo is to provide further information to Council regarding communication number 463/23 Relocation of Crossing Guard - Beaverton, submitted by Lauren Kuckty, Safety Officer for Durham Student Transportation Services, that was deferred from the July 17th meeting.

Background:

Durham Student Transportation Services (DSTS) is making a request to relocate the existing school cross walk from Mill St. to the all-way stop intersection at Simcoe Street and Mara Road, as shown on Schedule '1' attached. The Guard would then manage crossing students over both Regional Roads. The intersection already has cross walk markings on the pavements as well as curb cuts that meet AODA standards. The cross walk signs would just need to be moved and the pavement markings at Mill Street would need to be removed.

In discussions with DSTS, staff were made aware that all elementary schools have a 1.6 km radius with respect to walking distances to the respective school. However, if students within that 1.6 km radius do not have a safe walking path, they are then bussed.

It was noted at the time that, there were 7 registered students within the 1.6 km radius located south of Simcoe and west of Osborne that attend Holy Family Catholic School. As of late July that number has increased to 10 students (6 families). These students have traditionally been bussed.

The Highway Traffic Act (HTA) sets out the rules of the road in Ontario, including the operation of school crossings and the role of school crossing guards. Several sections refer to pedestrians and road crossing regulations. Specific legislation related to school crossings and the operation of school crossing guards is found in section 176 of the HTA (R.S.O. 1990, Chapter H.8). Of particular importance is the fact that school crossing guards can only be assigned if the speed limit is equal to or less than 60 km/h.

In 1992, representatives from both the Ontario Traffic Council (OTC) and the Ontario Ministry of Transportation (MTO) collaborated to prepare a report entitled School Crossing Review 1992. That document was then used as the springboard from which the OTC produced the 2006

[School Crossing Guard Guide \(SCGG\)](#). In 2017 OTC released an update to the 2006 SCGG that accounted for new types of pedestrian crossing across Ontario and the amendments made to the Highway Traffic Act and the Ontario Traffic Manuals. Since 2017, various municipalities and practitioners have applied the principles outlined in the 2017 SCGG in Ontario.

The SCGG outlines a number of guidelines for various types of intersections, how to collect and conduct warrants for each, as well as recommendations with respect to minimum student crossing volume. Generally, the threshold outlined in the SCGG is 40 students, however municipalities can adopt a separate policy with a lower threshold. Brock Township currently does not have a stand-alone school crossing guard policy and relies on the Ontario Traffic Council's SCGG as well as discussions with partnering agencies.

Analysis:

Brock manages two Beaverton school crossing locations (Mara/King & Mill/Simcoe). With the construction of the new Beaver River Public School the students that walked to school will be bussed (temporarily) to the Thorah Central Public School building on Highway 12, until such time as the new school has been completed and occupancy given. No crossing guards are required for bus stop locations.

As a result of the new construction the need for both crossing guards would not be required for the 2023/2024 school season.

Should Council support the DSTS request to move the guard from Mill Street to Mara & Simcoe, then DSTS would notify the students registered at Holy Family C.S. and living in the south/west quadrant of Simcoe & Osborne that they would no longer be bussed and would have to walk to school with the crossing located at Simcoe & Mara.

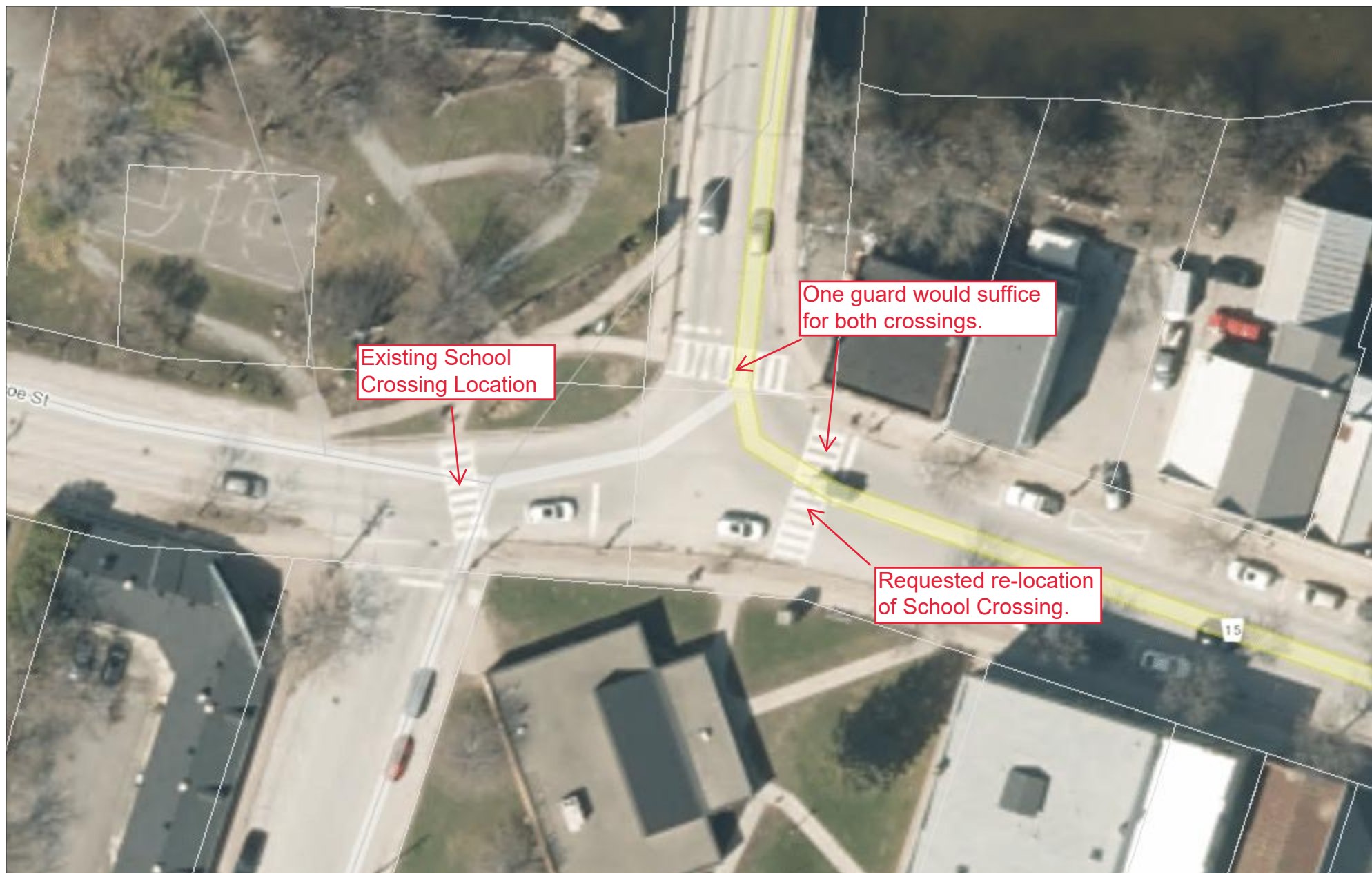
Given the minimal number of students impacted and that they currently are bussed to Holy Family C.S., staff are suggesting that request to move the guard be re-evaluated for the 2024/2025 school year when the new Beaver River Public School has opened, and DSTS has advised of the number of new registrations to Holy Family C.S.

In regard to the previously contracted school crossing guards in Beaverton, the Township values their continued services and invite them to submit their interest in acting as "School Crossing Guard Back-ups" for any of the other locations in Brock for the 2023/2024 school season, should that guard not be able to attend the assigned shifts.

Respectfully submitted,



Fernando Lamanna
Clerk, Deputy CAO



This map is a user generated static output from an Internet mapping site and is for reference only. Data layers that appear on this map may or may not be accurate, current, or otherwise reliable.
THIS MAP IS NOT TO BE USED FOR NAVIGATION