



One System.
Best Health.

Lakeridge Health Update to the Township of Brock

June 26, 2023



Lakeridge
Health

One System. Best Health.

- Relentlessly pursuing and leading a robust strategy of health system integration.
- Connecting services from primary care to community care to hospitals to long-term care so they work as one.
- Empowering people to live their best health.



Lakeridge
Health



Lakeridge Health Capital Projects



- Jerry Coughlan Health & Wellness Centre will provide increased access to modernized services to Durham Region including a new Surgical Centre.



- Lakeridge Gardens celebrated its first anniversary.
- Looking to the future: new vision for senior's care across Durham Region.



- Lakeridge Health completed the Stage 2 submission for the Bowmanville Hospital Redevelopment in December 2022.



- Independent site selection panel recommended the Whitby site.
- Will add an estimated 600 beds to Durham Region.

Together, Best Mental Health

New Mental Health Strategic Plan

- The roadmap to deliver a more integrated system of mental health and substance use care.
- We are already starting to see the results of this multi-year plan as we have launched several initiatives, including a new virtual access point to the Rapid Access Addiction Medicine (RAAM) clinic and Central Connect, a new referral model.
- Continued collaboration and engagement with our key partners, through the Integrated Planning Committee, and with people with lived experiences.



Increasing Access to Care: Virtual Care Services

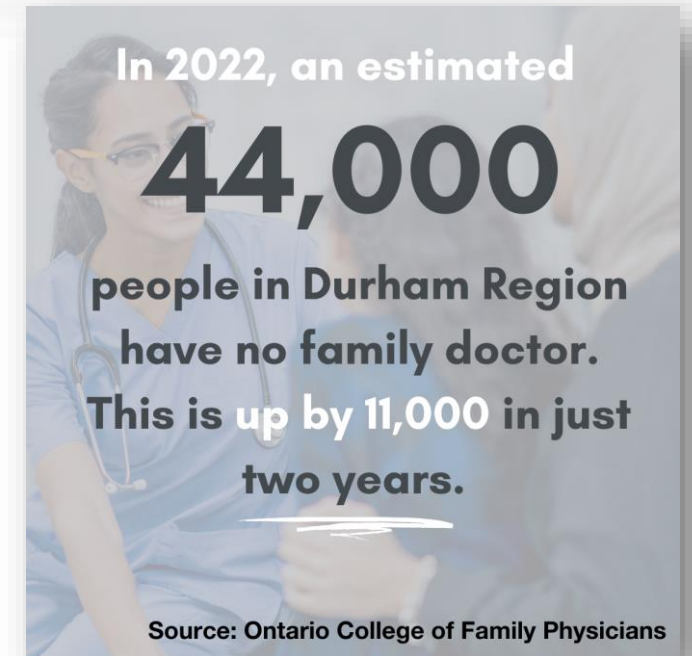
- Over the last few years, Lakeridge Health has expanded the use of virtual technology to provide greater access to care.
- Urgent Care Durham provides timely access to a physician through a virtual portal.
- The Virtual RAAM increases access to vital addictions services and treatment.
- A new virtual Heart Function Clinic is helping to improve access to cardiac care and reducing ED visits and hospital readmissions.



Increasing Access to Primary Care



- Durham Ontario Health Team functions as a connector to primary and community care.
- Primary Care Hubs to ensure health of the population and connect every Durham Region resident to a primary care provider.
- New Queen's-Lakeridge Health MD Family Medicine Program will help create more primary care capacity in Durham Region.
- New Department of Family and Community Medicine to coordinate development of the regional primary care network.





Lakeridge
Health

Leading Health System
Transformation and Integration
in Durham Region

**We're on a new
health journey!**

